

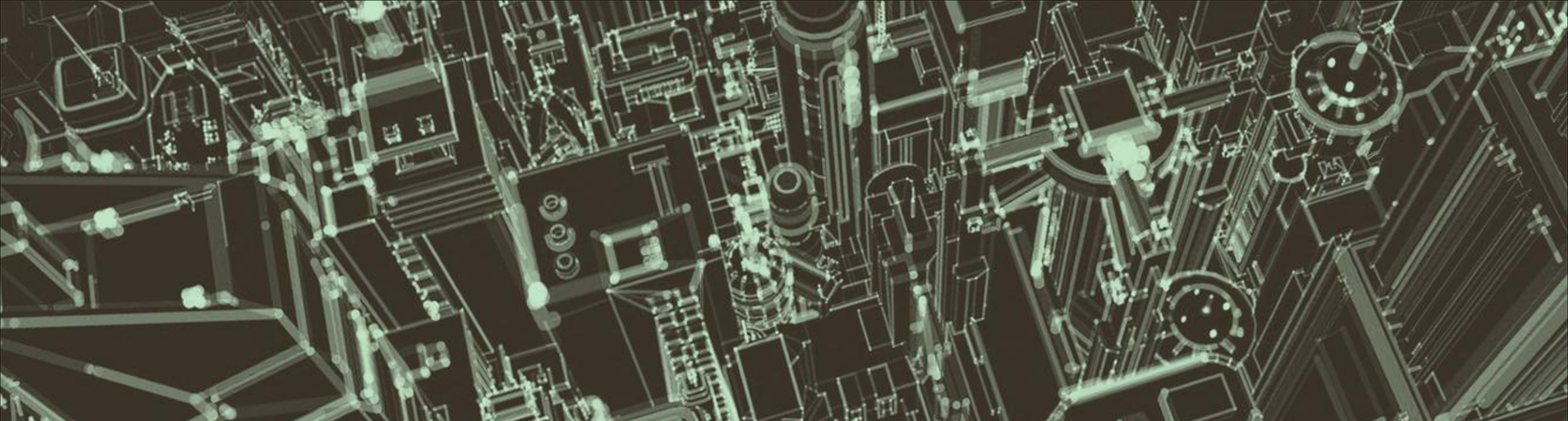
Greater Exeter Strategic Plan

Simon Thornley MRTPI



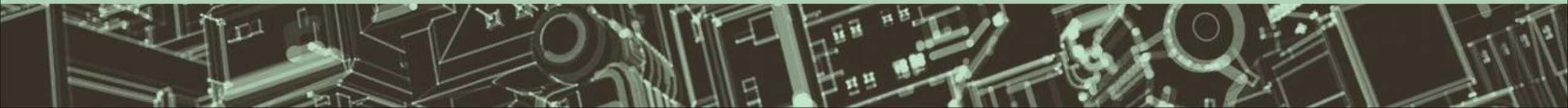
Greater Exeter Strategic Plan

- Greater Exeter – the place
- Strategic Discussions
- Attitudes to Growth
- Governance and Resources
- Lessons

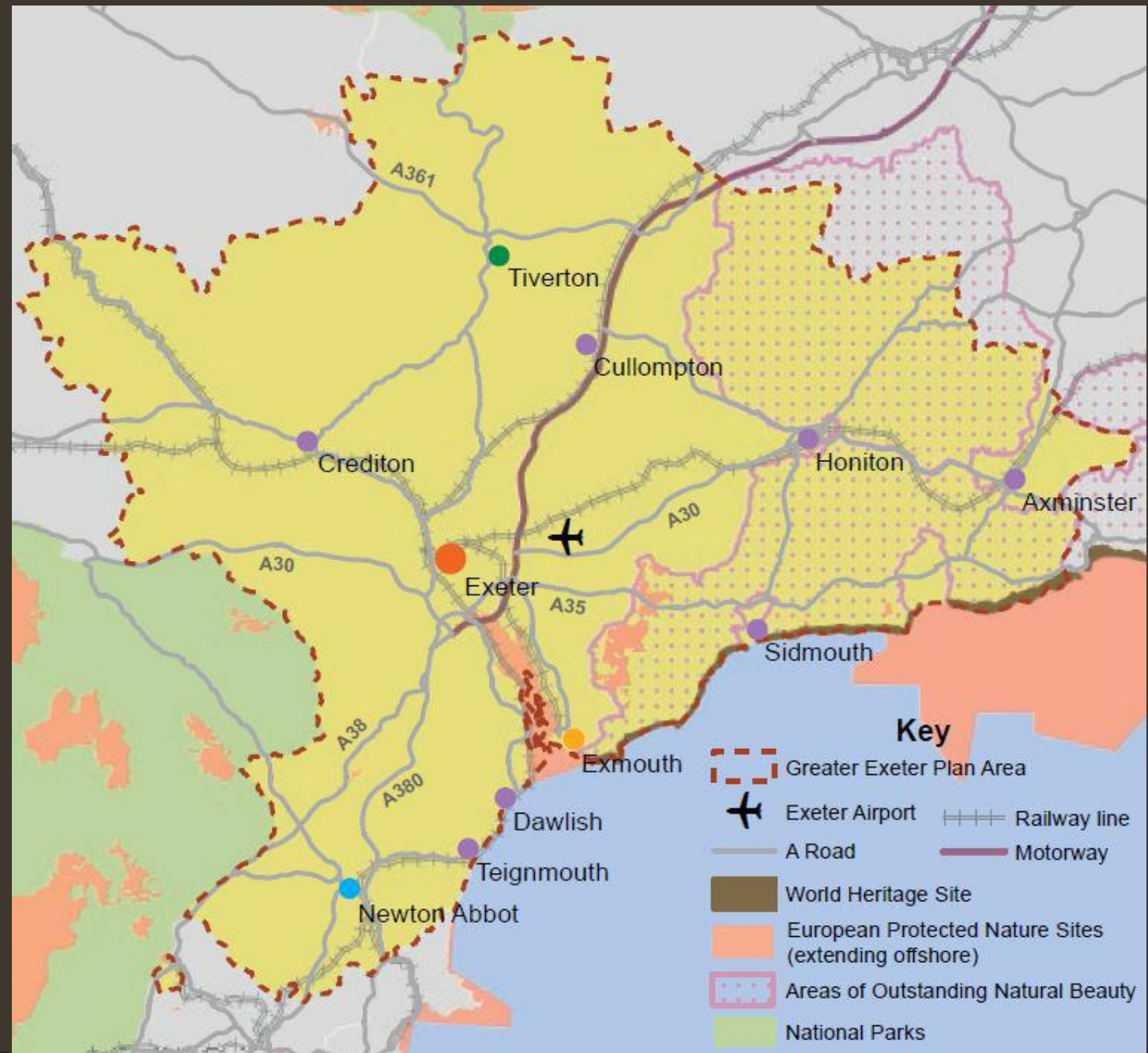


Greater Exeter

The Place



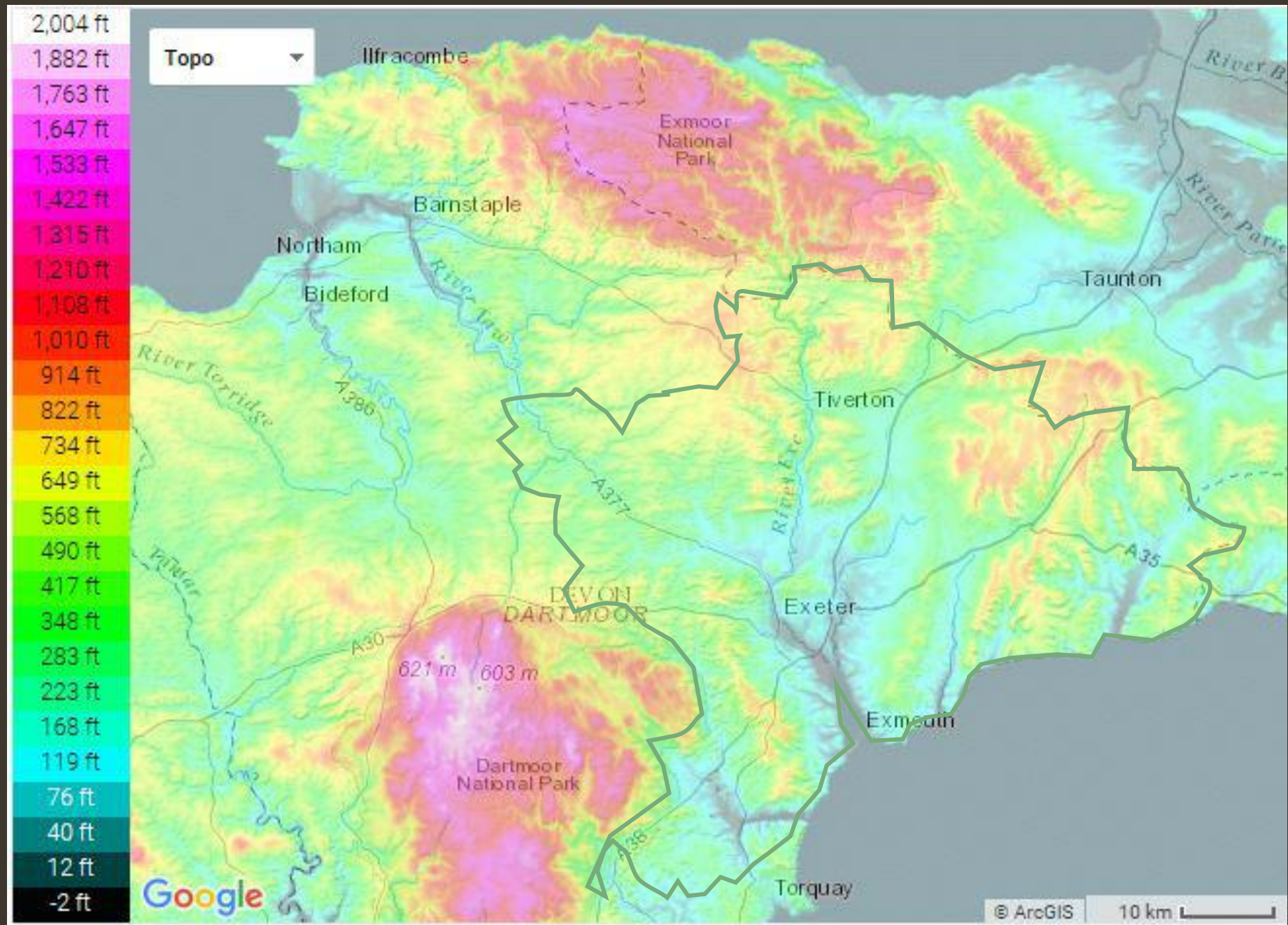
Greater Exeter



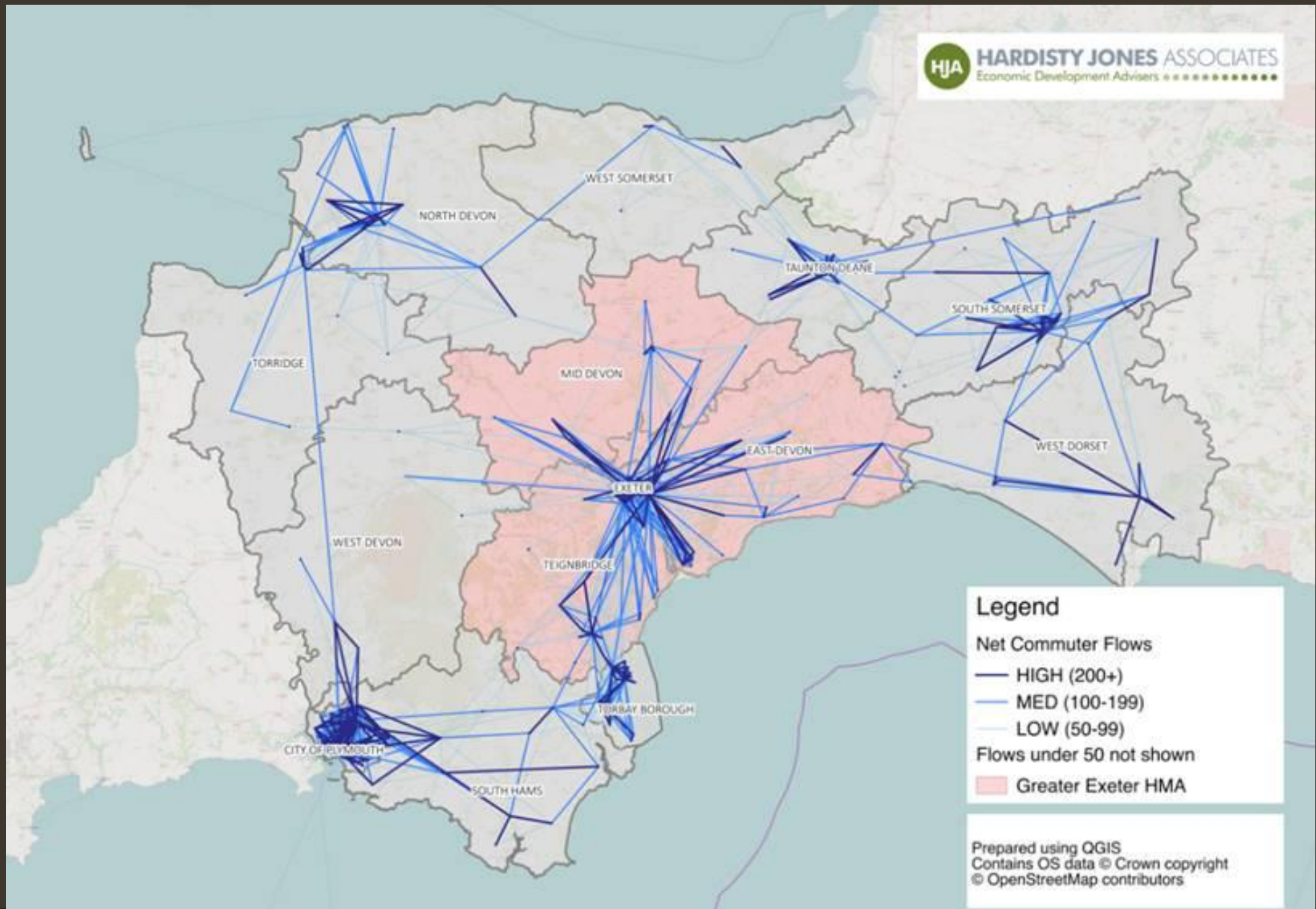
Greater Exeter Physical Geography

2194 sq km
(847 sq miles)

Broadly the
River Exe
catchment with
surrounding hills.

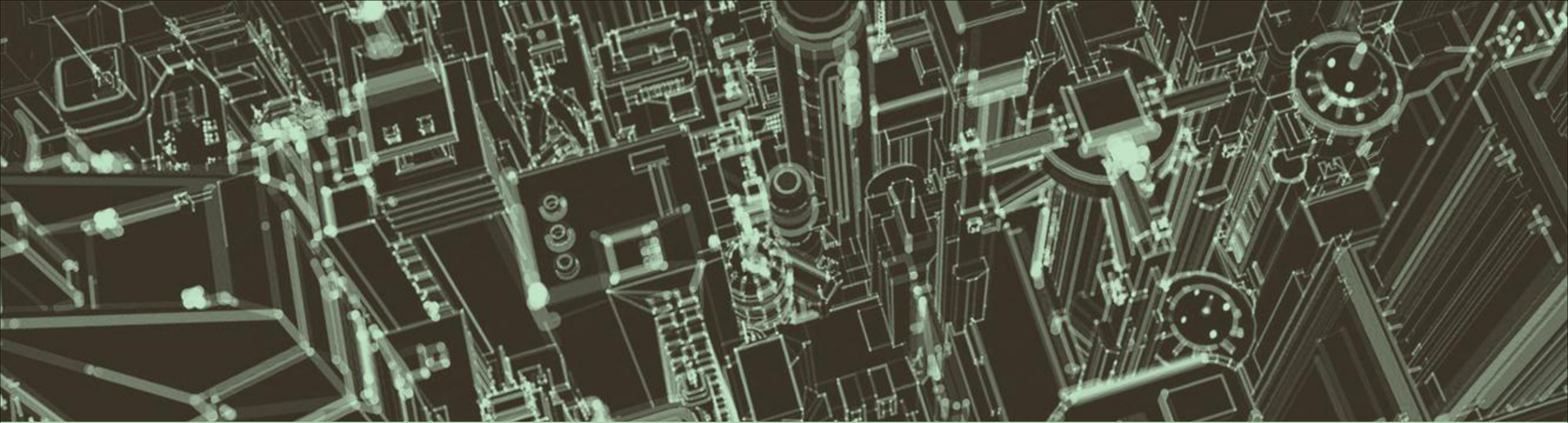


Greater Exeter & Devon Key commuting patterns

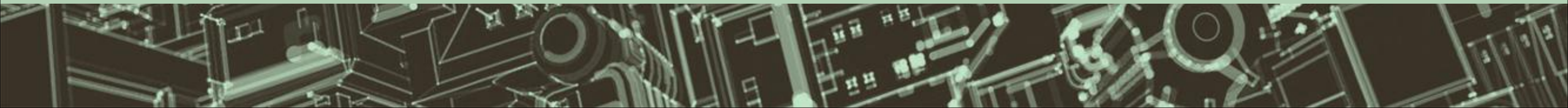


A Single functioning city region

- Interlinked economy
- One overall housing market
- Reasonably distinct from other city regions
- Administrative boundaries generally make no sense on the ground
- Transport planning much more effective across this wider area
- Choose the most appropriate growth locations



Vision and Strategy Work



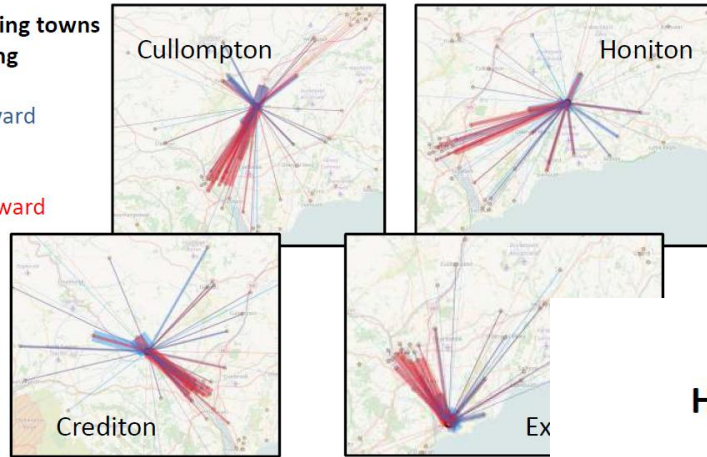
Greater Exeter



**Exeter facing towns
Commuting**

Blue – inward
commute

Red – outward
commute



How do cities and their regions respond?

Bordeaux

reviving the historic core, public transport transformation, public realm, managing expansion



Copenhagen

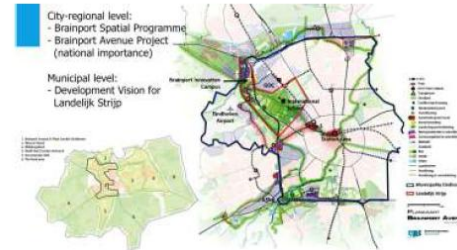
'Finger plan', international connections, sustainability, cycling and liveability



How do cities and their regions respond?

Eindhoven

Industrial 'garden city', reinvention of Philips town as global knowledge and innovation hub



Freiburg

Green economy and sustainable urban growth, planned new communities



Visioning – local information and international inspiration

Visioning – approaches to bring councillors into the action

Breakout session 1

Activity 2

- Individual postcard from the future
- What will Greater Exeter be like in 2040.....
- and how was this influenced by plans made in 2017/18?
- One card from each table to be selected to read out – the rest will be displayed

- High tech/New technology
- World leading data and environmental companies
- Entrepreneurs- Well paid jobs/nationally comparable
- More smaller employment units (as companies budget for more remote working/home working)
- Work less
- Autonomous Transport/driverless cars/community travel schemes
- Sustainable public transport – tram/'air car'
- Traffic free/ No cars – foot or bike (and electric bikes)
- New cycle routes/infrastructure
- Good/regular flights from Exeter airport
- Speedy train to London/Axminster etc
- Car ownership down due to mobile service/ other forms of transport
- Less vans/lorries due to 3D printer
- Migration
- Higher living standards
- Green energy – wind and other
- Green city and towns/Exeter is energy neutral
- Local food production
- Air quality/Clean air/ zero pollution
- Passivhaus – cheap, warm easy to run homes
- Climate change and resilience
- Sustainable building – orientation/solar/ green roofs/water recycling etc
- Affordable well designed quality homes

The Greater Exeter Strategic Plan vision

The plan

The Greater Exeter Strategic Plan makes the big, cross-boundary decisions about growth and infrastructure in the Greater Exeter area looking many years ahead. The innovative planning and ambitious investment decisions taken together by the local authority partners aim to realise our potential by creating great places to live full lives.

The place

In 2040 we are an accessible and networked city region of linked but distinct communities. Our economy is low carbon and productive. We invest in our citizens, celebrate the area's beauty and continue to work together for mutual long term benefit. We fully utilise our unique south western city-town-country-coast environment and our growing academic and skills base for smart growth. We enable prosperous and healthy lives in high quality homes and communities with access to great greenspaces and high quality Jobs linked by a reliable, sophisticated and sustainable transport system.

The priorities

Greater ambition – hardwiring delivery in from the start

Greater innovation – fast growth in cutting edge businesses including becoming the UK centre for data analytics, environmental futures, knowledge-based industries and smart logistics

Greater education – nurturing, attracting and retaining a world class workforce

Greater prosperity – local wages rise to above the national average

Greater places for people – providing the homes we need in high quality, healthy neighbourhoods in the right places

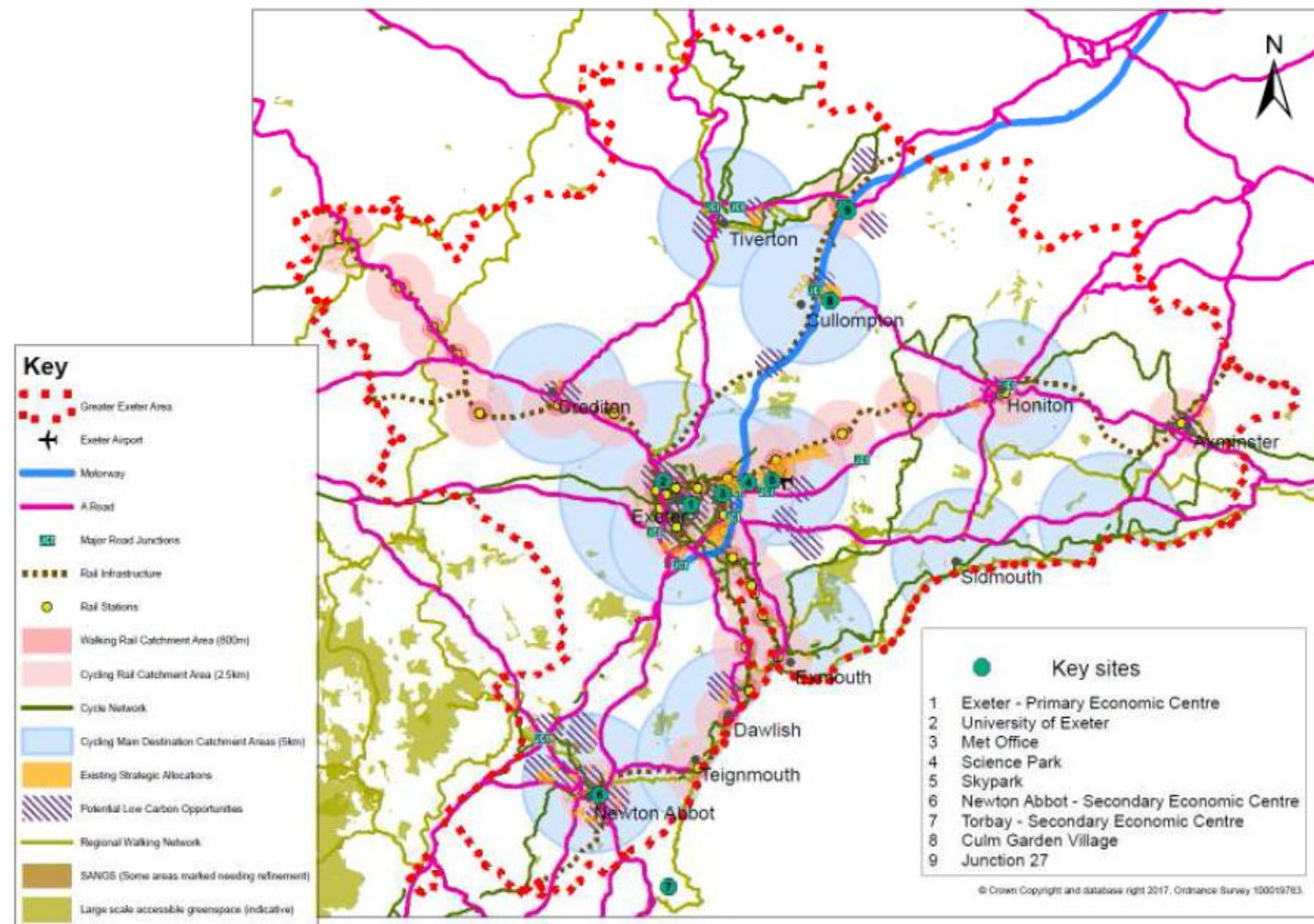
Greater efficiency – a 60% reduction in carbon emissions

Greater connectivity – gigabit ready communities with majority sustainable travel

Greater places for nature – rebuilding biodiversity and peoples' access to it

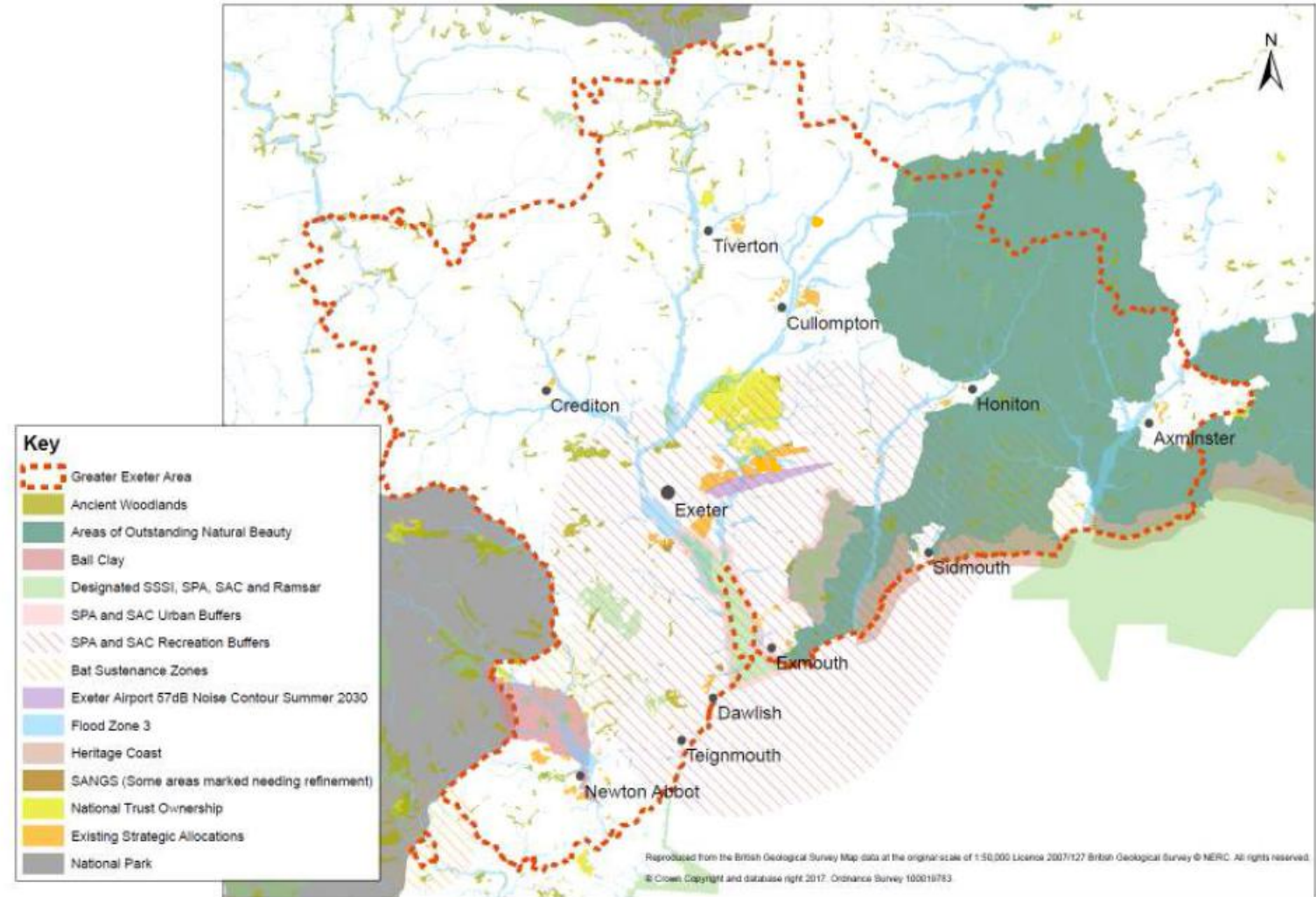
Opportunities

Opportunities

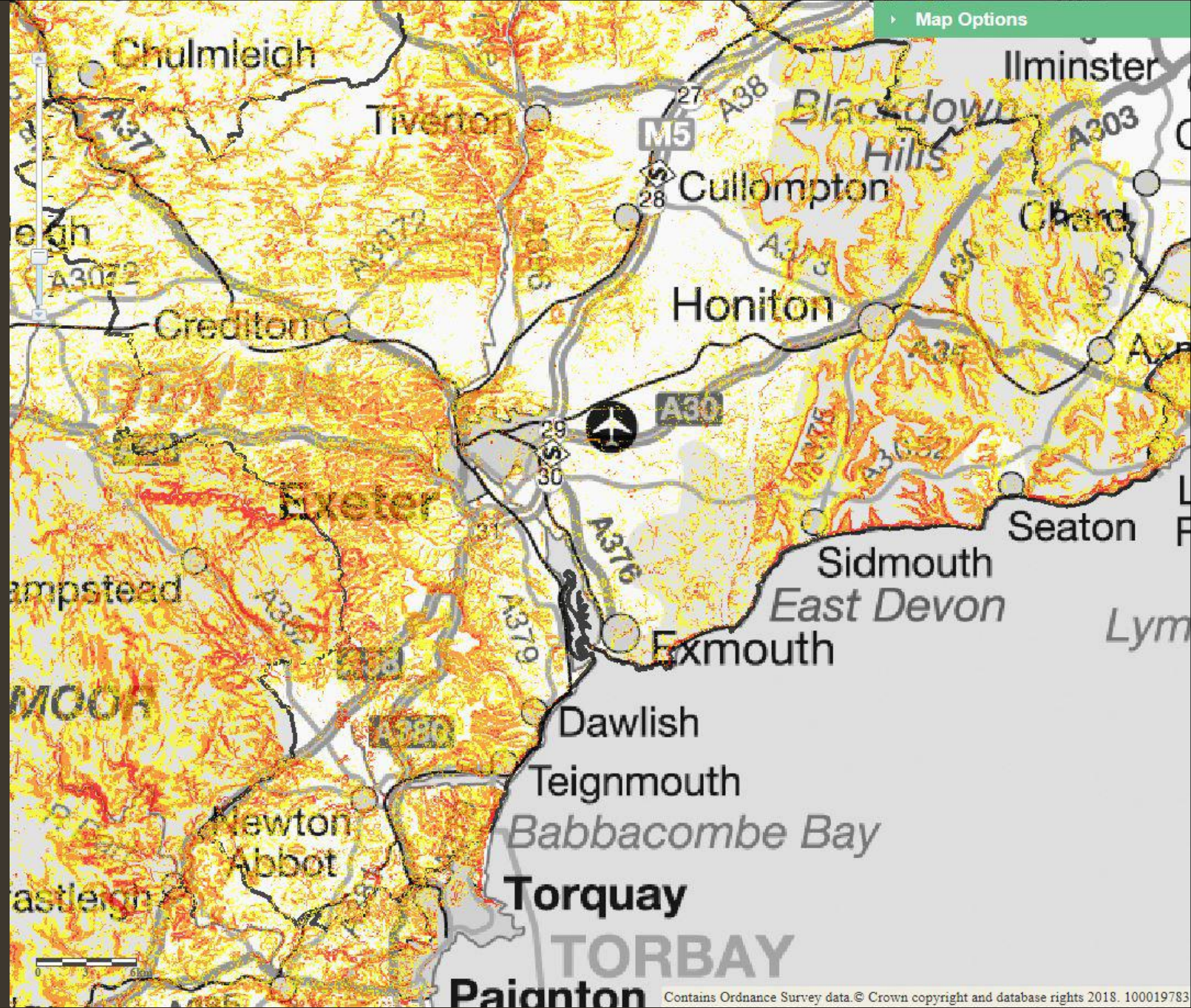


Sensitive Areas

Most sensitive areas and existing allocations



Steep Slopes



Transport Strategy – accessible and networked city region

Greater Connectivity – Enhanced Travel Choices

Connected City Region

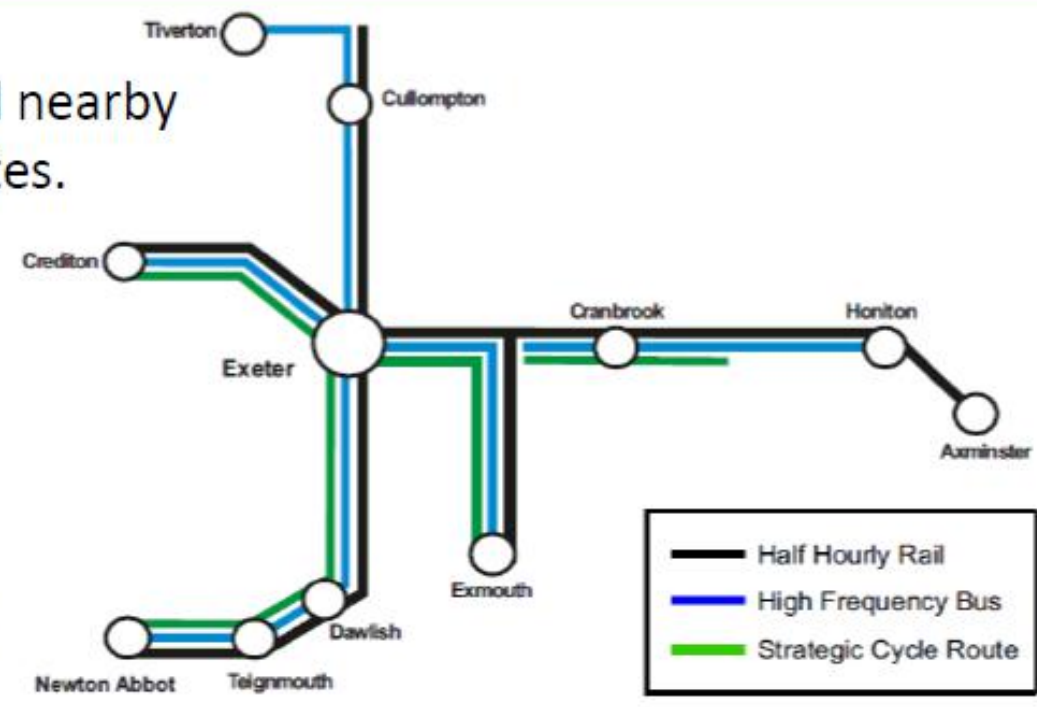
Consistent standard of sustainable transport between Exeter and nearby towns, i.e. half hourly rail, buses every 15 minutes and cycle routes.

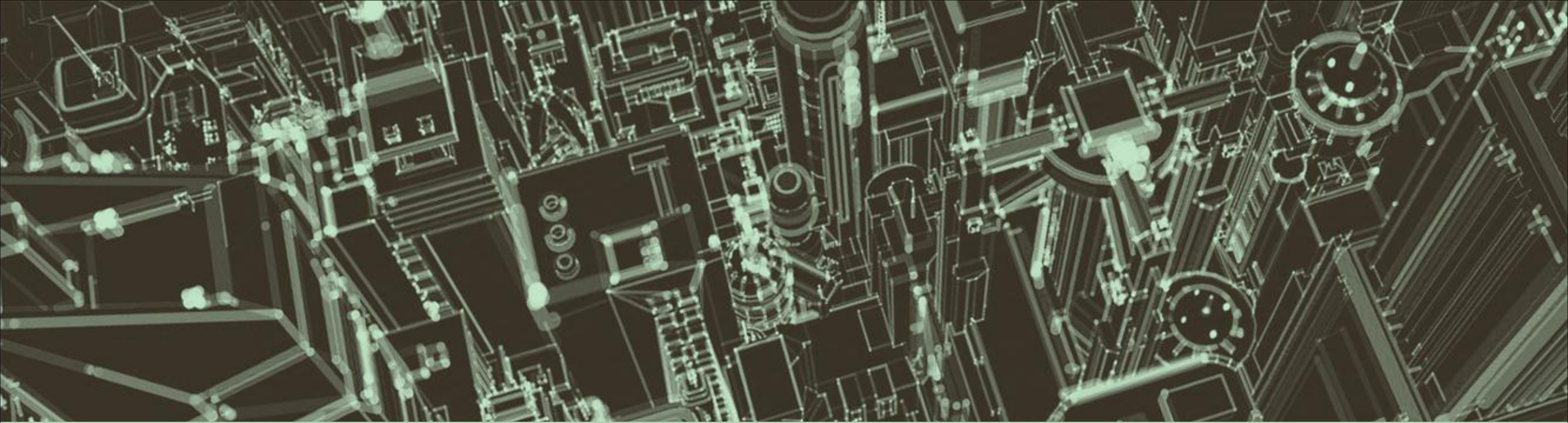
Nationally Connected

Retain and enhance strategic road (M5/ A303), rail and air connectivity with the rest of the country

Park & Ride on all main corridors

Double the number of P& R spaces serving the city and improve bus journey time reliability on key corridors into the city





Governance and Resources



Joint Committee or Joint Plan?

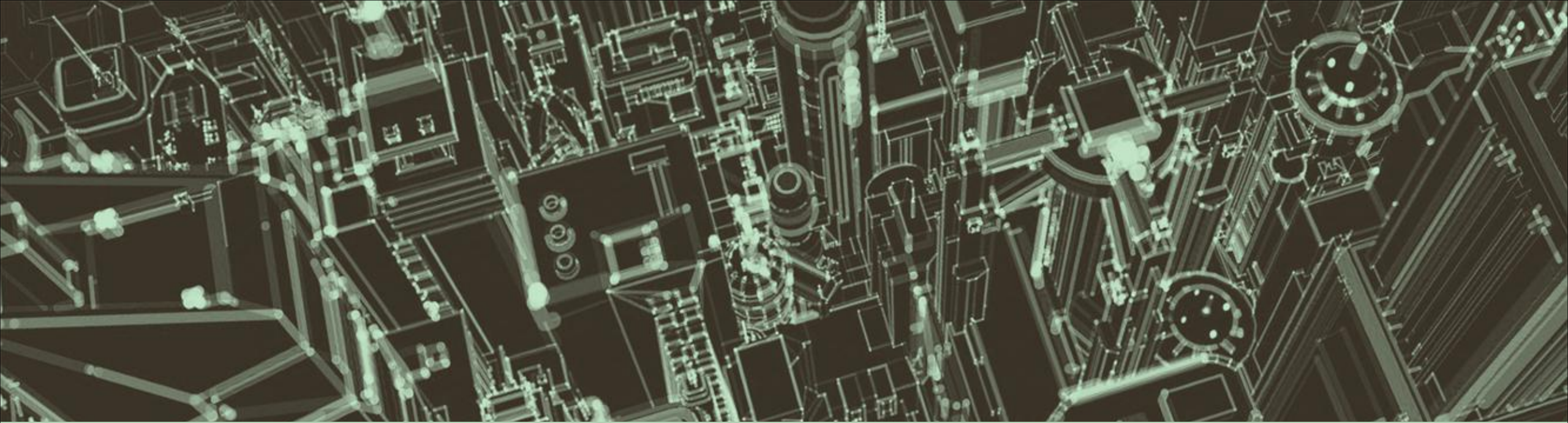
Local planning authorities can prepare a joint plan with neighbouring authorities under section 28 of the Planning and Compulsory Purchase Act 2004, or form a joint committee (to include one or more county councils) under section 29 of the Planning and Compulsory Purchase Act 2004.

We didn't go down the joint committee route.

- Political sensitivities
- LPA can still leave the joint committee if they choose
- Needed council hearts and minds either way

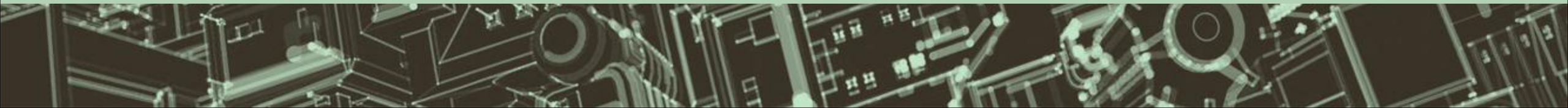
Joint Team and Budget

- Initially council officers worked on projects and kept in touch via meetings, phone, email
 - Project management by meetings of chief planners
 - Work was dependent on individuals setting aside time, and subject to vagaries of individual team priorities
 - Patchy and generally slow progress
- 5 Councils agreed to pool existing staff into a joint team with a manager
 - Hosted by Exeter City Council
 - Generally physically together 3 days per week
 - Overseen by “Project Assurance Group” and “Principals Group” – of which more later
 - Progress sped up and became more coordinated and effective
- Also agreed to pool funding into a single budget held by Devon CC and used to fund evidence and other costs



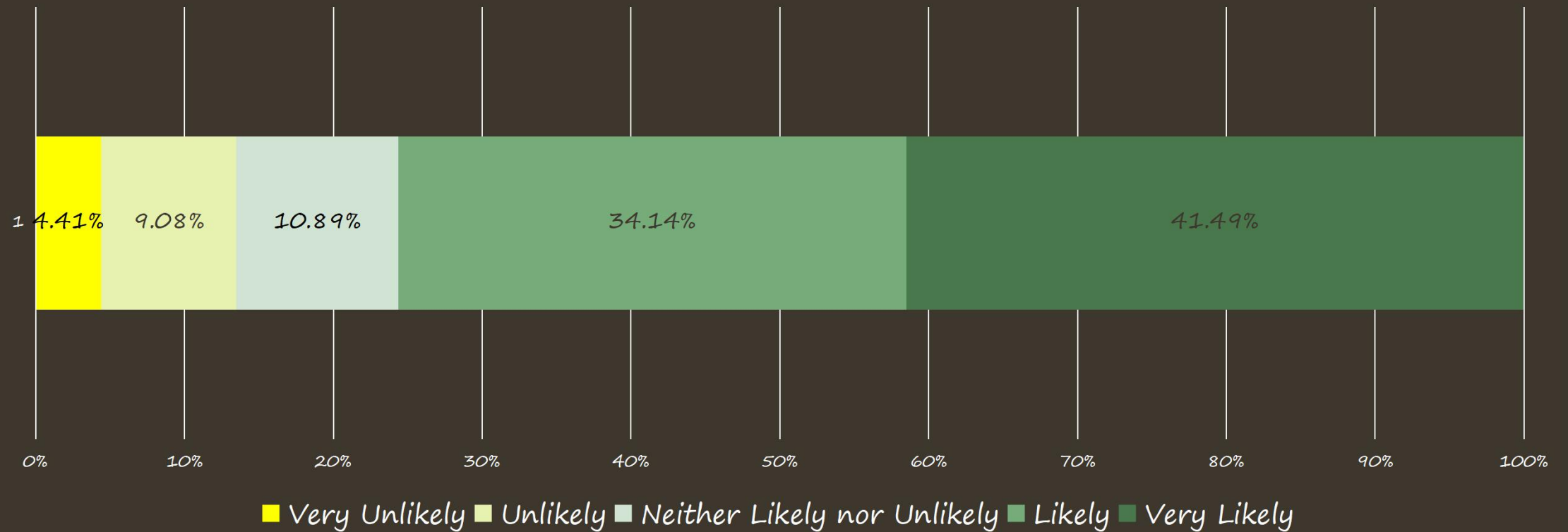
Attitudes to Growth

Primary Research



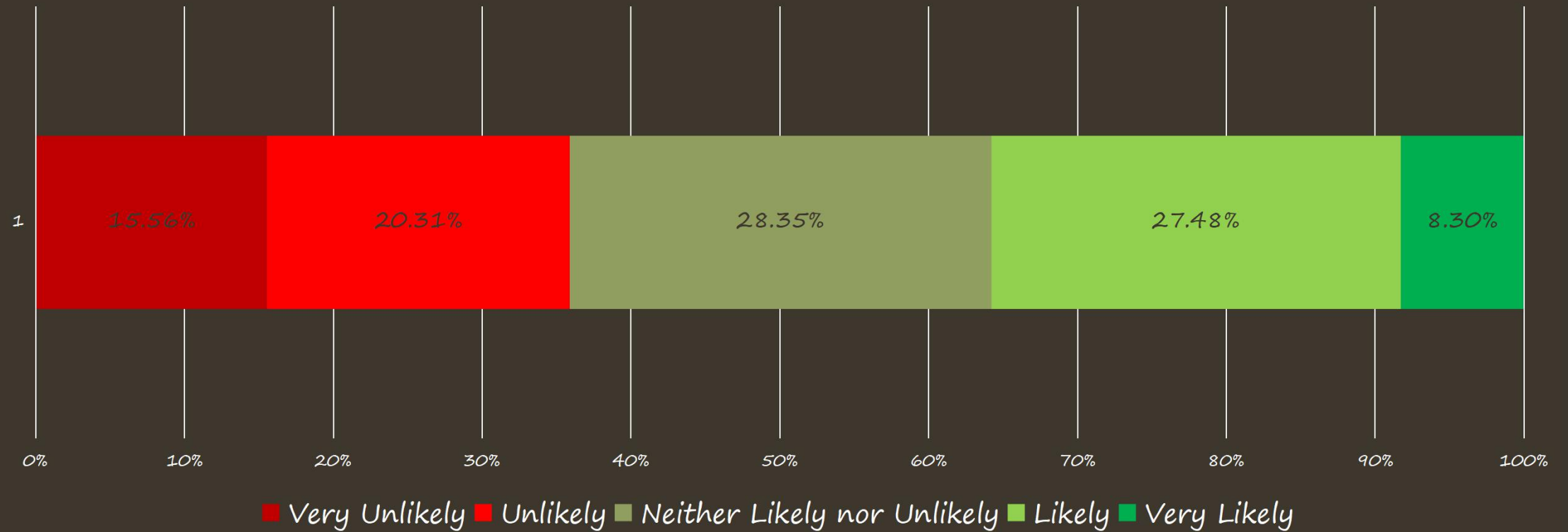
Do you feel your local area is going to get more housing development in the future?

NET LIKELINESS + 62.14%

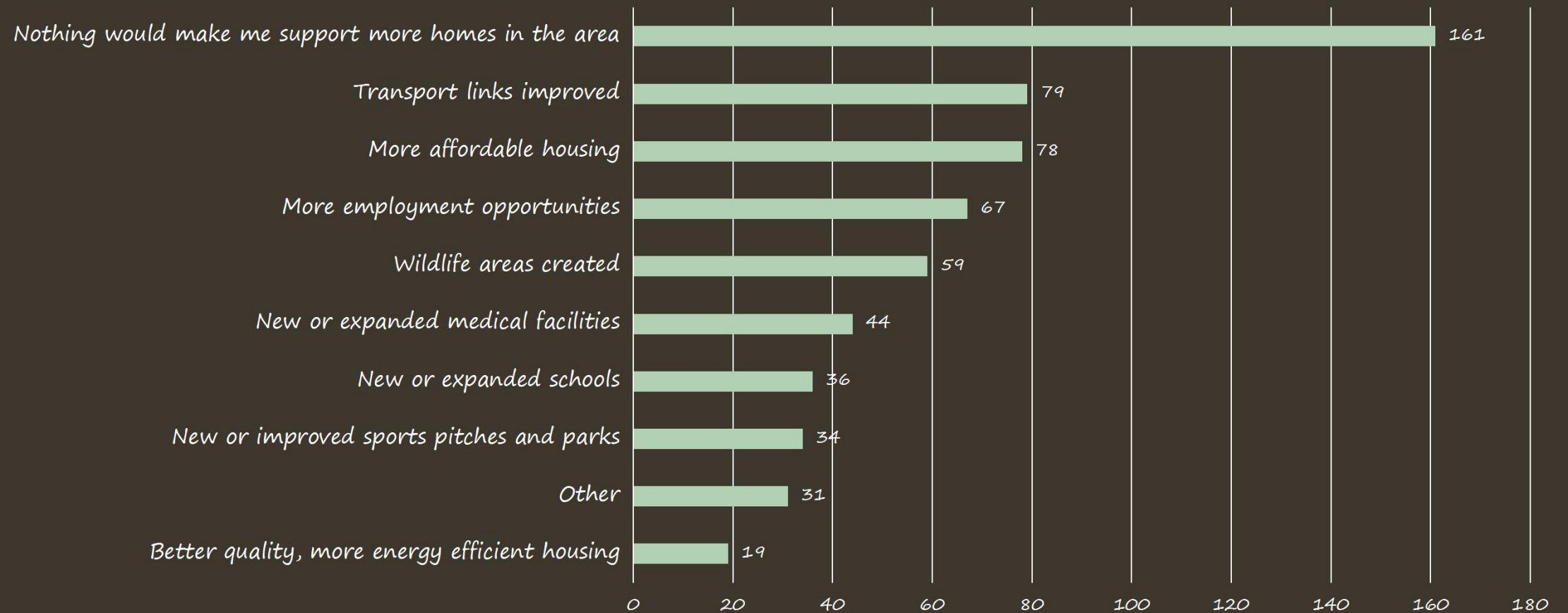


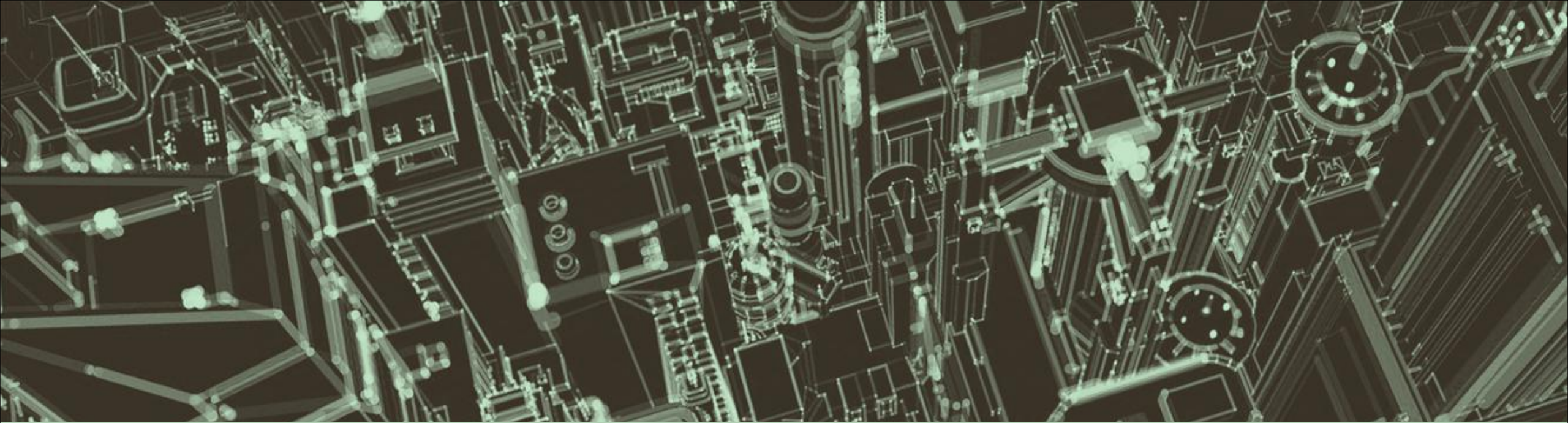
How likely are you to support increased housing development in your local area?

NET POSITIVE - 0.09%

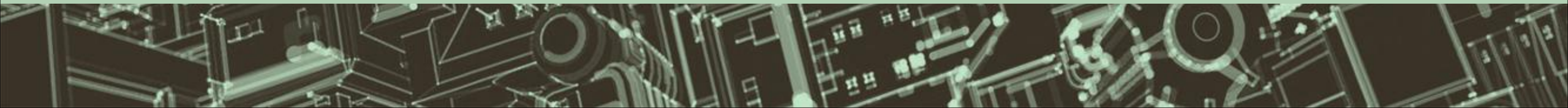


From the list provided which, if any, of these advantages would make you support homes being built in your local area? (could pick up to 3)





Missed Opportunities?

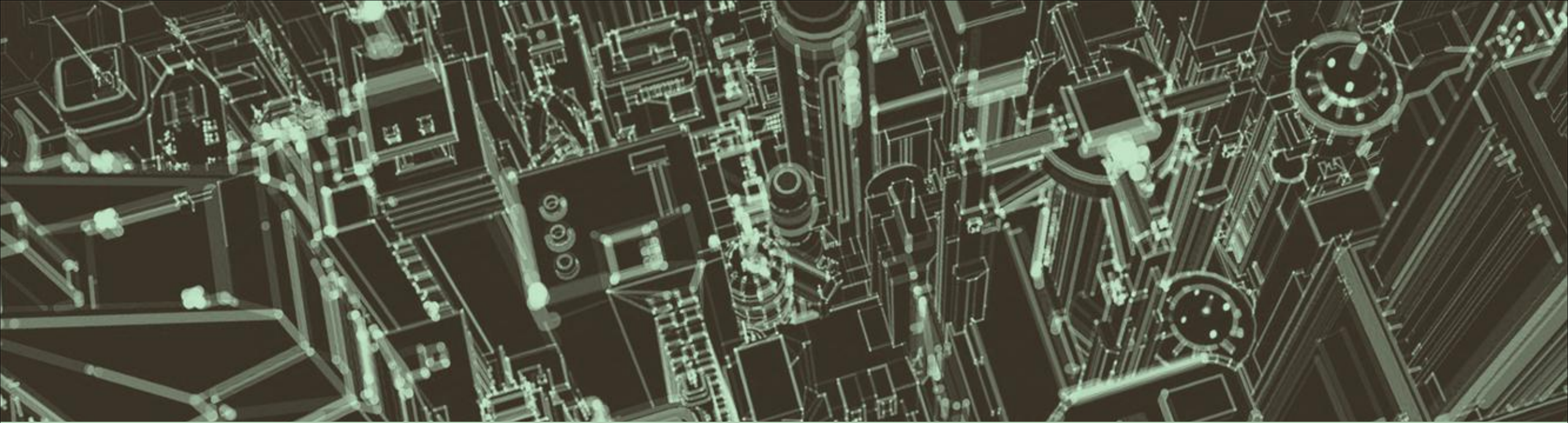


Hearts and Minds

- Members agreed the principle quite easily – four separate full councils
- Too easily? Did we bring members' hearts and minds with us?
- Concern about resilience of joint planning when we get to those difficult decisions
- Elections – 30% turnover of councillors, possibly leadership
- Impact on timetable of re-socialising joint planning benefits

Digital Twins

- We took a fairly traditional approach to evidence – consultant or in-house, paper (pdf) – based, parcelled up.
- Single GESP GIS but essentially read-only – useful, but could be more.
- Relies on planners to absorb and link up disparate evidence and data
- If I was starting now I would recommend investing in a digital spatial/economic/transport model of the area.
- Opportunity to consider options more quickly, and more interactively
- Which could be updated as and when new data/evidence arrives

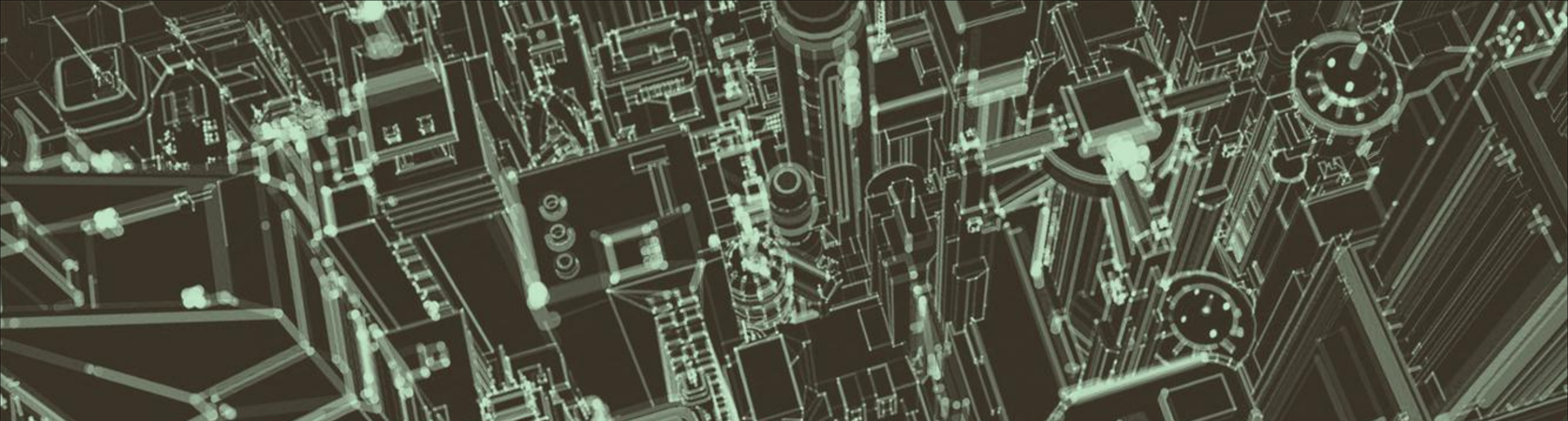


Lessons



Some Lessons

- From scratch, it will take longer than a single authority plan so it's not for all authorities
- Hearts and Minds means resilience and speed
- Keep on with the "boundary blind" mantra to get genuine strategic discussions
- Single team, single budget the only way
- Streamline decision making – consider Joint Committee more seriously than we did
- Definitely do attitudes research
- Seriously consider scope for digital modelling



Thank You

www.gesp.org.uk

